

95 tahoe manual transmission



File Name: 95 tahoe manual transmission.pdf

Size: 4841 KB

Type: PDF, ePub, eBook

Category: Book

Uploaded: 7 May 2019, 14:14 PM

Rating: 4.6/5 from 706 votes.

Status: AVAILABLE

Last checked: 17 Minutes ago!

In order to read or download 95 tahoe manual transmission ebook, you need to create a FREE account.

[**Download Now!**](#)

eBook includes PDF, ePub and Kindle version

[Register a free 1 month Trial Account.](#)

[Download as many books as you like \(Personal use\)](#)

[Cancel the membership at any time if not satisfied.](#)

[Join Over 80000 Happy Readers](#)

Book Descriptions:

We have made it easy for you to find a PDF Ebooks without any digging. And by having access to our ebooks online or by storing it on your computer, you have convenient answers with 95 tahoe manual transmission . To get started finding 95 tahoe manual transmission , you are right to find our website which has a comprehensive collection of manuals listed.

Our library is the biggest of these that have literally hundreds of thousands of different products represented.



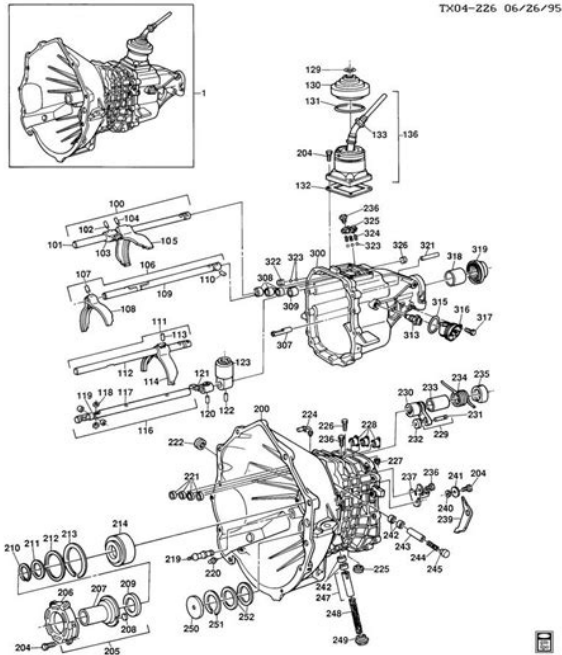
Book Descriptions:

95 tahoe manual transmission



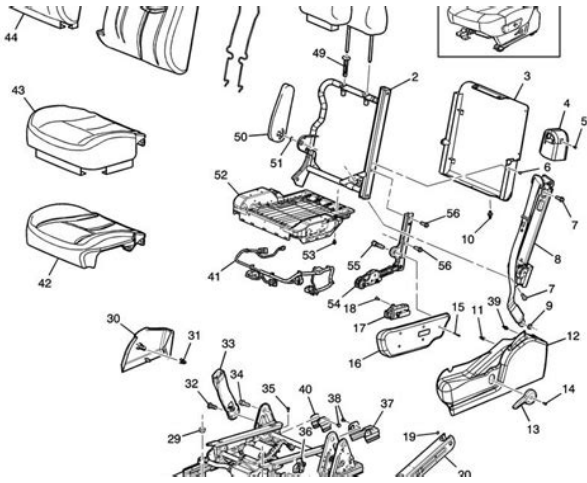
It is not to be confused with GMC Denali. This situation changed when GMC rebadged the fullsize Jimmy as the Yukon in 1991. Chevrolet waited until 1994 to rebadge the redesigned midsize S10 Blazer as the Blazer, renaming the fullsize Blazer as the Tahoe. The name Tahoe refers to the rugged and scenic area surrounding Lake Tahoe in the western United States. The name Yukon refers to the Yukon territory of northern Canada. For the 1995 model year, the Tahoe and Yukon gained a new 4door model slotting in size between the 2door models and the longer wheelbase and higher passenger capacity to up to nine passengers like the Chevrolet Suburban and newly named Yukon XL. The Yukon is only sold in North America and the Middle East. Lengthened wheelbase models are available for both as the Suburban for Chevrolet and Yukon XL for GMC. A luxury Denali model joined the Yukon lineup in 1998 for the 1999 model year. As of 2001, a Denali version of the Yukon XL has also been available as the Yukon XL Denali. The Cadillac Escalade is closely related to the Denali models of the Yukon. All were 2door models through 1994. The Chevrolet K5 Blazer was discontinued after the 1994 model year. The Chevrolet Tahoe was introduced in 1995 for the 1995 model year with the addition of an allnew 4door version. 4door Yukon, Tahoe production started on January 20, 1995 at Janesville Assembly. The Tahoe was Motor Trend magazines Truck of the Year for 1996. It is named for Lake Tahoe on the CaliforniaNevada border in the United States. This was a true truck chassis, and was based on that used in the Chevrolet Silverado fullsize pickup truck. Both twodoor and fourdoor models were produced in rear and fourwheel drive. The twodoor weighs roughly 4,500 lb 2,041 kg while the fourdoor weighs approximately 5,500 lb 2,495 kg. The upscale Denali trim line to the Yukon was introduced in 1999 as these vehicles became popular with wealthy families. <http://gregoryshow.ru/files/file/eos-20d-user-manual.xml>

- **95 tahoe manual transmission swap, manual transmission 95 tahoe, 95 tahoe manual transmission, 95 tahoe manual transmission problems, 95 tahoe manual transmission parts, 95 tahoe manual transmission fluid, 95 tahoe manual transmission manual.**



In Venezuela, the Tahoe 2door was released in 1993 4WD only, called the Chevrolet Grand Blazer, and in 1996 the 4door was released as the Grand Blazer 4door 2WD. In 1996 the 2door was discontinued. In 1996 only Grand Blazer 4door 4WD was available. In Bolivia, 1995 the 4door was released as the Tahoe 4door 4WD. These special edition vehicles were produced in the Arlington, Texas assembly plant for the 2000 model year only. It is reported that GM disliked the idea of an SS badged vehicle at a time when insurance companies were already demanding higher premiums for SUVs. The Tahoe SS prototype vehicles made in 1996 were painted either an unspecified metallic green or metallic blue, but the Tahoe Limited was produced only in Onyx Black. The Tahoe Limited had a distinctive exterior appearance that included a factory equipped ground effects, a monochromatic theme with bumpers and grille painted in the same high gloss black as the body, removal of the roof rack, and fog lamps integrated into the front bumper. Features of the Tahoe Z71 were similar to those of the Tahoe Limited with a few key differences to distinguish the 2WD Tahoe Limited from the 4WD Tahoe Z71. Features that differ from those previously mentioned on the Tahoe Limited included the Z71 offroad chassis package 46 mm 1.8 in Bilstein shock absorbers, a standard 3.73 rear gear ratio G80 locking differential, colorkeyed wheel flares, trim, grille and bumpers, underbody skid plates, inset driving lights built into the center of the front bumper, oversized two row radiator, twotone leather seating surfaces in either a gray or neutral theme, distinctive taillamp lens protectors, black tubular side assist step bars, black brush guard, and distinctive 16 inch Alcoa five spoke 6 bolt polished aluminum wheels. In Mexico, the GMT800 Chevy Tahoe is called the Chevrolet Sonora. A 2door GMT800 Tahoe prototype was made but never entered production. Suburban and Tahoe models sold in Mexico offered the

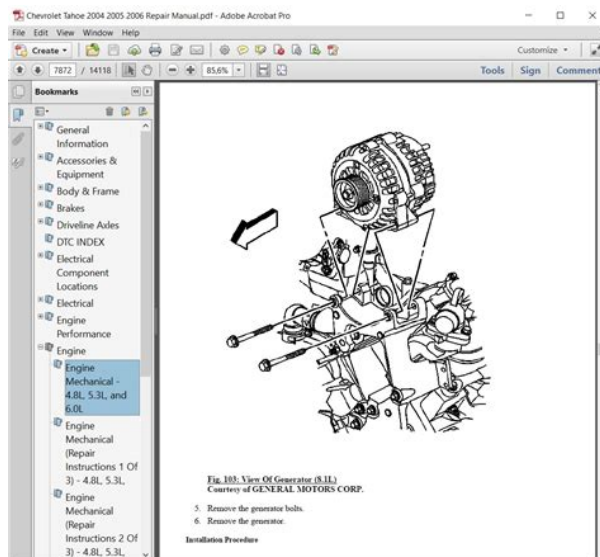
5. http://ciecanada.com/fck_upload/eos-20d-software-instruction-manual.xml



7 L SmallBlock Chevrolet V8 RPO Code R31 as an option in early models, whereas it was replaced by the new 5.3L Vortec V8 engine in all other markets. Both vehicles now featured softer lines as part of a more aerodynamic design. The interior was also updated with new seats, dashboard, and door panels. Side impact airbags are standard for driver and front passenger, OnStar communications system optional, automatic headlamp control standard, Poweroperated sunroof optional for first time, new uplevel 9 speaker audio system with rear mounted subwoofer, Driver Message Center, new PassLock II theft deterrent system, Autoride Suspension system optional on Tahoe LT and Yukon SLT, all new independent SLA front suspension with torsion bars and all new five link rear suspension with coil springs. Both models were discontinued after the 2000 model year. The GMC Yukon Denali was redesigned for the 2001 model year, and the Cadillac Escalade was redesigned in 2002 there was no Escalade for the 2001 model year. Onstar is now optional on Tahoe LS. Base trim is discontinued. Vortec 5300 V8 is now flexfuel E85 capable. Tahoe LT models ordered in Redfire Metallic now come with bodycolor front bumper cap, bodyside moldings and wheel flares. Premium ride suspension is made standard on all models excluding Z71. New features include StabiliTrak stability enhancement system, dual level airbags, passengersensing system, adjustable brake and accelerator pedals with memory. New radio systems with Radio Data System RDS, custom designed Bose audio system available on models with front bucket seats, XM Satellite Radio, and Panasonic rear seat DVD entertainment system. TriZone climate control with manual controls standard on LS and Z71, automatic controls standard on LT. Second row bucket seats optional on models with leather seating surfaces. LT models feature power adjustable, bodycolor exterior mirrors with power folding, memory and integrated turn signal indicators.

A redesigned instrument cluster featured a new Driver Information Center, which can monitor and report on up to 34 different vehicle system functions including Service StabiliTrak, Ice Possible and Door Ajar. The interior was refreshed, including a new eight button steering wheel that allows the driver to safely access new infotainment features as well as a redesigned center console. These included a new Electronic Throttle Control ETC system to improve throttle feel and new oxygen sensors to improve durability and reduce emissions during engine warmup. Models sold in California received a more robust catalytic converter to meet Ultra Low Emissions Vehicle ULEV standards. A new battery rundown protection system automatically turns off the headlamps, parking lamps, and interior lighting if left on for more than 10 minutes with the key removed from the ignition. Hydroboost brakes and a front passenger seat belt reminder were also added as was a 7 to 4 pin trailer brake wiring adapter. 2004 was the final year Tahoe could be ordered with rear barn doors. All Tahoes come standard with a rear liftgate and liftglass. New aerodynamic changes, including a new front air deflector, help the Tahoe improve fuel efficiency by one MPG. These changes included combining the OnStar and XM Satellite Radio antennas into one single unit, removal of the Chevrolet badging on the liftgate, relocating the catalytic converter closer to the engine to improve emissions performance and a new manual parking brake adjuster. The GMT900

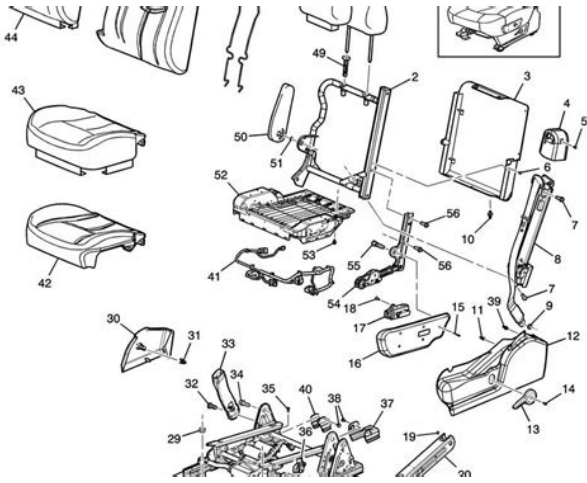
based Tahoe and Yukon exceeded initial sales expectations and continued to sell well despite a weakening market for large SUVs. The shortwheelbase Tahoe and its police counterpart began production at Arlington Assembly on December 1, 2005. SWB Yukon production began in early 2006, with Janesville Assembly coming online as well. For the first time, GM used the Tahoe name in Mexico.



<http://afreecountry.com/?q=node/3537>

The GMC Yukon boasted a monolithic grille and headlights, while the Chevrolet Tahoe grille was divided by a bodycolored bar similar to the chrome bar found on the GMT800 Tahoe. Both the redesigned Yukon and Tahoe featured a more angular design that gave the vehicles a more upscale appearance than their predecessors. The interior was significantly redesigned as well, features a faux wood trim dashboard with chromeaccented instrument controls. New door panels, as well as new seats, were also added to the interior it still retains its ninepassenger seating availability on LS and SLE models only like the Chevy Suburban and GMC Yukon XL. For 2009, the 6.2 L engine in the Yukon Denali got a power increase to 403 hp 301 kW, while a 395 hp 295 kW 6.2 L was added as an option for the Tahoe LTZ. Also, The Apprentice sponsored a controversial online contest in which anyone could create a 30second commercial for the new Tahoe by entering text captions into the provided video clips; the winners ad would air on national television. An early example of usergenerated marketing, headed by ad agency Campbell Ewald, the campaign began to backfire when hundreds of environmentally conscious parodies flooded YouTube and Chevys website critiquing the vehicle for its low gas mileage. Like its larger siblings Suburban and Yukon XL, the front fascias of the Tahoe and Yukon are distinct, but from the base of the Apillars back, they share most of the same styling cues. This now includes inlaid doors that tuck into the door sills, instead of over them, improving aerodynamics and fuel economy, and lessens interior noise. The hoods and liftgate panels now are made of aluminum in an effort to reduce vehicle weight. A moreefficient, directinjected EcoTec3 powertrain coupled with improved aerodynamics help increase fuel economy for the SUVs.

<http://istvantaborosi.com/images/canon-powershot-a560-manual-espa-ol.pdf>



Both fourth generation SUVs do not share a single piece of sheetmetal or lighting element with the brands fullsize pickup trucks, and the front grilles of both vehicles are slightly altered to give them their own identity. The third row fold flat feature is accomplished using a raised platform that reduces available cargo space behind the third row seats. Multiple USB ports and power outlets are now spread throughout their interiors, including one 110 volt, three prong outlet, with the Tahoe adding an available eight inch color touchscreen radio with next generation MyLink connectivity along with an available rear seat entertainment system but will not feature a Bluray option that is exclusive to the Suburban for 2015, while the Yukon added a standard eight inch diagonal color touch screen radio with enhanced IntelliLink and available navigation. Both SUVs feature sound deadening material to improve cabin quietness. A new Cadillac Escalade and Cadillac Escalade ESV arrived in dealerships in April 2014. Models continued for the Tahoe and Suburban as LS, LT, and LTZ, and the Yukon and Yukon XL as SLE, SLT, and Denali. The Tahoe and Yukon went on sale in February 2014 as an early 2015 model year vehicle. Prices for the all new GM SUVs are expected to stay the same as the current generation GMT900 SUVs. The Tahoe Hybrid, Yukon Hybrid, and Yukon Denali Hybrid models were dropped along with their powertrains, as well as the Cadillac Escalade Hybrid and Cadillac Escalade Hybrid Platinum. The Yukon Denali AWD was also dropped as well. Fog lamps, front tow hooks and front parking assist are also included. The changes included power adjustable pedals, forward collision alert, IntelliBeam headlamps, lane keep assist and a safety alert seat as part of the newly introduced enhanced driver alert package as an available option on the LS trim.

<https://www.cbiinc.org/images/canon-powershot-a560-aiaf-manual.pdf>



The inside floor console with storage area SD card reader was removed and a new infotainment system was introduced, officially ending the CD player era for the Tahoe; the 8 inch MyLink feature

was expanded to the LS trim and became standard replacing the 4inch display, although the navigation feature remains as an option on LT and standard on LTZ. A new liftgate shield was added to the Theft Protection Package, along with the new lane keep assist which replaced the lane departure warning. The capless fuel fill tanks became standard on all trims. Siren Red Tintcoat and Iridescent Pearl Tricoat became the new color trims, replacing Crystal Red Tintcoat and White Diamond Tricoat. However, only one of their phone brands at any one time can be used. New additions include the teen driver feature, the App Store feature, a rear seat reminder, and low speed forward automatic braking. Two new colors, Blue Velvet and Pepperdust Metallic, were added to replace four colors. The 22inch wheels option was expanded to three, and the rear seat entertainment system was overhauled. Two new colors, Dark Blue Sapphire Metallic and Mineral Metallic were introduced, the latter exclusive to the Denali, which is also adding a new 22inch ultra bright aluminum wheels with midnight silver premium paint and a headup display to its features. The interior backlights changed from red to blue. The 2018 Tahoe will have the Custom Edition package added as an option on the base LS trim level. The GMC Yukon received a 10 speed automatic transmission on the Denali trim level and the GMC Yukon is facelifted for 2018 with a refreshed grille similar to the one from the 2017 GMC Acadia and 2018 GMC Terrain. The Tahoe expanded its size length to 210.7 inches, and the wheelbase to 120.9 inches while shortened down by 15 inches longer due to the rear wheelbase moving back by 5 inches, making it the largest SUV in the full size length segment.

It gains 11 cubic feet of cargo space behind the third row and 10 inches of thirdrow legroom. The LS, Z71, and RST trims will not have this feature because of their configurations. Newly updated features include a 10.25inch touch screen that is now standard on all trims, and a pair of 12.6inch LCD rear screens that can play movies and offer content from passengers' smartphones, and can play different programs on the two screens. A new push button shifter column P, R, N, D is placed on the dashboard, nine camera displays for enhanced towing capabilities and a total of 30 additional safety features have been implemented throughout the Tahoe. An Air Ride Adaptive Suspension is standard on the higher trims, likewise with an 8inch driver screen. Like the Tahoe, the Yukon will also feature an independent rear suspension, a 3.0liter inlinesix turbodiesel engine, and a topshelf suspension option featuring air springs and magneticride shocks, a standard 5.3liter V8, an optional 420hp 6.2liter V8, and a 10speed automatic transmission that is standard across the lineup. It also gains 4.9 inches in the wheelbase but only 0.4 inch in overall length, making it still short of the Tahoes length. The dashboard will have two versions, one similar to the Tahoe while a different one with a larger entertainment screen will be exclusive to the Denali. The Yukons design follows GMCs design language, with the front grille mimicking the Sierra but the tailgate mimicking the GMC crossover SUV lineup with the lights extended to the tailgate doors. The issue was sent out to dealerships ahead of receiving the vehicles and were instructed to inspect the engine oil cooler lines at the quick connector on the radiator in order to ensure they are properly seated before selling or dealertrading the vehicle. The Denali is available on both standard and XL versions and is the topoftheline trim in the GMC Yukon lineup.

<https://www.gscn.it/wp-content/plugins/formcraft/file-upload/server/content/files/1628038ecdb1a3--Browning-vortex-manual.pdf>

In the interior, in addition, the Denali features luxury options not available in the Yukon. These included an upgraded leather interior, power seats, heated seats front and rear, Bose stereo system, and some woodgrain on the dashboard. The 1999 Yukon Denali and Escalade also saw the first application of GMs OnStar communications system in a fullsize SUV. It was not until 2001 that the Denali and Escalade were redesigned. While the Escalade departed from its Yukon based exterior design scheme in attempt to hide its roots, the Yukon Denalis exterior is almost the same as that of a post2000 model year GMT800 Yukon. The biggest change was in the styling, such as the flattened

tailgate reminiscent of the new Tahoe, and particularly the grill and headlight shapes, which made the Yukon look less aggressive than previous models. The only exterior difference between the Yukon Denali and the standard Yukon are the chrome grille and extensive use of chrome accents; and of course the insignias, embeveled rockerpanels, chromed headlights and the Vortec 6200 engine which it shares with the Cadillac Escalade. The Yukon Denali continues with the topoftheline features using the similar features found in the Tahoe LTZ trim and the front grille honeycomb design, equipped with a new active noisecancellation technology and GMs thirdgeneration magnetic ride control suspension as a standard feature. The updated and redesigned vehicle will move up in its top of the line level trim due to the introduction of the AT4 that was slotted above the SLT level. It will also have a different dashboard feature that will be exclusive to this trim. The vehicle can run on either gasoline, electricity or a mixture of the two using automatic TwoMode Hybrid system that monitors the vehicles torque, and state of the battery to choose the most efficient source of power. The Tahoe is considered a strong or full hybrid, in that it can run entirely on the battery for a limited range at low speeds.

It is also used by the Sao Paulo State Police and the Rio Grande do Sul State Police. But as the cars grew old, the great majority of them were substituted, mainly by the smaller Chevrolet Blazer midsize SUV. The Tahoe name was not used in Brazil because it would be unfamiliar to most Brazilians since it refers to the Lake Tahoe on the border of Nevada and California. The 4th generation of the Tahoe has not been available in Venezuela. A review of the benefit to exclude hybrid vehicles with a displacement greater than 1.8L rendered the Tahoe Hybrid less costeffective than the nonhybrid in Ecuador. The original prototype had rear disc brakes based on the Bbody 9C1s whereas the production Z56s came with rear drum brakes. Plans for outfitting the Tahoe with the Z56 police package originated around the 1994 model year when GM broke news about phasing out its Bplatform sedans Caprice, Impala SS, Roadmaster at the end of the 1996 model year where a replacement was imminent since GM ended production of its bodyonframe passenger sedans due to SUV sales. Since the introduction of the GMT900, Chevrolet currently offers two versions of the police package Tahoe; a fourwheeldrive version and a two wheeldrive version. This version be used for all purposes including pursuits and high speed responses. The center of gravity in this vehicle is lower than that of the fourwheeldrive version and the ground clearance is about 1 in 25 mm less, with a standard rear bumper replacing the tow hitch on civilian Tahoes. Highway patrol agencies prefer the two wheeldrive version, where pursuits and long distance responses are more common. As of the 2012 model year, the Tahoe was the last bodyonframe, rearwheel drive police vehicle manufactured for the United States market since Ford phased out its aging Panther platform, the Volvo XC90 based Ford Police Interceptor known as the Ford Explorer in civilian trim.

The vehicle became available in 2WD and 4WD drivetrains with orders coming in the first quarter of 2014 for special service models, followed by the orders for the police pursuit models afterwards. Rocker covers are borrowed from the GM LT4 engine found in high performance Corvettes, Camaros and Cadillacs. Engine and transmission coolers are PPV specific. Bridgestone codeveloped Firehawk Pursuit tires with GM for the 20 inch steel wheels. 6 piston, 16 inch rotor Brembo brakes are standard issue on the PPV. The suspension is lowered and further fortified. The CUCV nomenclature was changed to Light Service Support Vehicle in 2001. In 2005, LSSV production switched to AM General, a unit of MacAndrews and Forbes Holdings. The LSSV is a GMbuilt Chevrolet Silverado 1500, Chevrolet Silverado 2500 HD, Chevrolet Tahoe, or Chevrolet Suburban that is powered by a Duramax 6.6 liter turbo diesel engine. The dashboard has additional controls and dataplates. Retrieved 20091025. CS1 maint archived copy as title link By using this site, you agree to the Terms of Use and Privacy Policy. I want to put a automatic Not sure if a 700r4 would be the way to go or if itd even Your computer will be Driveshafts If you do some Chevy and my transmission is freshly rebuild mine The chassis Please refer to CarGurus Terms of Use. Content will be removed if CarGurus becomes aware that it violates our policies. Advance Auto Parts has 12

different Remanufactured Manual Transmission for your vehicle, ready for shipping or instore pick up. Here at Advance Auto Parts, we work with only top reliable Remanufactured Manual Transmission product and part brands so you can shop with complete confidence. Some of our top Remanufactured Manual Transmission product brands are ProKing. We're sure you will get the right product to keep that Tahoe running for a long time.

If you prefer to shop in person for the right Remanufactured Manual Transmission products for your Tahoe, visit one of our local Advance Auto Parts locations and you'll be back on the road in no time! Customer satisfaction is our highest priority. Product Features Units dynamometer tested Units are not equipped with shifters or non attached bell housings. Customer satisfaction is our highest priority. Product Features Units dynamometer tested Units are not equipped with shifters or non attached bell housings. Customer satisfaction is our highest priority. Product Features Units dynamometer tested Units are not equipped with shifters or non attached bell housings. Customer satisfaction is our highest priority. Product Features Units dynamometer tested Units are not equipped with shifters or non attached bell housings. Customer satisfaction is our highest priority. Product Features Units dynamometer tested Units are not equipped with shifters or non attached bell housings. Customer satisfaction is our highest priority. Product Features Units dynamometer tested Units are not equipped with shifters or non attached bell housings. Customer satisfaction is our highest priority. Product Features Units dynamometer tested Units are not equipped with shifters or non attached bell housings. Customer satisfaction is our highest priority. Product Features Units dynamometer tested Units are not equipped with shifters or non attached bell housings. Each transmission assembly is manufactured with the highest technology equipment, the most intelligent engineering support, and the best practices available in remanufacturing today. Product Features All transmissions are completely disassembled and cleaned. All cases are media blasted. Internal parts are inspected for wear or damage and replaced as required. All bushings are inspected and replaced as required. 100% of friction components are replaced with upgraded heavy duty parts. Drum assemblies are air checked and side play is checked to assure proper clearance. 100% of seals, orings and gaskets are replaced.

100% of solenoids are checked and replaced if they do not pass duty cycle tests. Internal wiring harness are checked and replaced as necessary. Valve bodies are disassembled, cleaned, and measured for wear. Valve body valves and valve bores are inspected and valve bores are machined as required. Completed valve bodies are tested for proper operation prior to dyno testing. Transmissions are assembled, end plays are set and fasteners are torqued to the required specification. 100% of transmissions are dynamometer tested to ensure proper pressures and shift quality throughout the operating range. All upshifts and downshifts are checked against preset parameters. Torque converter stall speed and lockup is verified on the dyno to Customer satisfaction is our highest priority. Product Features Units dynamometer tested Units are not equipped with shifters or non attached bell housings. Customer satisfaction is our highest priority. Product Features Units dynamometer tested Units are not equipped with shifters or non attached bell housings. Customer satisfaction is our highest priority. Product Features Units dynamometer tested Units are not equipped with shifters or non attached bell housings. Customer satisfaction is our highest priority. Product Features Units dynamometer tested Units are not equipped with shifters or non attached bell housings. Find our most popular parts below Enroll now and start getting rewarded its easy. See your cars value Edmunds Expert Review 1995 Highlights Fullsize SUV gets a new name as S10based model takes Blazer moniker. New interior with driver airbag debuts. New dashboard features modular design with controls that are much easier to read and use. New fivedoor model is added midyear, sized between Blazer and Suburban. New model is offered only in LS or LT trim with a 5.7liter V8 and an automatic transmission in either 2WD or 4WD.

New console on models with bucket seats features pivoting writing surface, along with rear cupholders and storage drawer. The Tahoe had seen alot of battle, rot spots places, front end worn out, rear end hummed. I learned it was a throttle body injection system and being an auto technician

for 7 years I knew it was a very easy model to service. I have put 20000 miles on it, I still own it and love taking care of it. At 220,000 miles, it has seen many of my friends cars, foreign and domestic, sputter to an early expensive grave. Running costs are astoundingly cheap, even considering the unimpressive gas mileage. I had the transmission rebuilt at about 150,000, but thats the only major repair. I drive it crosscountry with complete confidence. Its easy to speed on the highway as the ride is so comfortable and the power readily available. While the dash is made of hard, cheap plastic, the gray cloth seats are indestructible, with no stains or rips. I hope it lasts many more years, as I dont see any affordable reliable replacement. Tough as nails, inexpensive to repair, this might be the last of the great American SUVs. Ive owned European luxury cars and have driven pretty much everything out there and this truck impresses me more than the Range Rover. The truck has 205,000 miles and still drives like a dream, and to call the 4 wheel drive powerful is an understatement. All and all this is my favorite of all the vehicles Ive owned. Available styles include 2dr SUV 4WD, LT 4dr SUV, LS 2dr SUV 4WD, LS 4dr SUV, LS 4dr SUV 4WD, LT 2dr SUV 4WD, and LT 4dr SUV 4WD. Shop with Edmunds for perks and special offers on used cars, trucks, and SUVs near Rutland, ND. Doing so could save you hundreds or thousands of dollars. Edmunds also provides consumer driven dealership sales and service reviews to help you make informed decisions about what cars to buy and where to buy them. Which used 1995 Chevrolet Tahoes are available in my area.

Shop Edmunds car, SUV, and truck listings Once you have identified a used vehicle Cant find a used 1995 Chevrolet Tahoes you want in Should I lease or buy a 1995 Chevrolet Tahoe. Is it better to lease or buy a car. Ask most people and theyll probably tell you And from a financial perspective, its true, provided youre willing to make Leasing, on the other hand, Its also good if youre someone who likes to drive a. Please try again. Please try again. Please try again later. Full content visible, double tap to read brief content. Register a free business account Please try your search again later. New bushing set. All new lipseals and gaskets. New Teflon rings. New seals. New filter. Modifications to planetarys for better lubrication. Plastic accumulators replaced by aluminum accumulators. High PERFORMANCE KEVLAR band. Free factory stock Torque Converter To calculate the overall star rating and percentage breakdown by star, we don't use a simple average. Instead, our system considers things like how recent a review is and if the reviewer bought the item on Amazon. It also analyzes reviews to verify trustworthiness. Please try again later. Wolfgang 5.0 out of 5 stars Recommend all the way. All Blazers came with 4 wheeldrive. The 1992 Blazer was unveiled at the 1992 North American International Auto Show on January 9, 1992. It retained the distinctive look of its predecessor, but offered such new features as a driverside airbag, braketransmission shift interlock, an allnew instrument panel and contoured seats. Also included were an optional center console standard with uplevel bucket seats converted to a mobile work station with a pivoting writing surface, map pocket, removable coin holder and a latched rear storage drawer. Later in the model year, a 4door Tahoe made its debut. A 2speed transfer case with a floormounted shifter provided shift on the fly operation. This workhorse can seat up to eight, handle rough terrain and tow up to 8,600 pounds.

<https://events.citeve.pt/chat-conversation/bose-wave-radio-alarm-clock-manual>