



File Name: cadillac deville 98 manual.pdf

Size: 2867 KB

Type: PDF, ePub, eBook

Category: Book

Uploaded: 28 May 2019, 21:33 PM

Rating: 4.6/5 from 574 votes.

Status: AVAILABLE

Last checked: 13 Minutes ago!

In order to read or download cadillac deville 98 manual ebook, you need to create a FREE account.

[Download Now!](#)

eBook includes PDF, ePub and Kindle version

[❑ Register a free 1 month Trial Account.](#)

[❑ Download as many books as you like \(Personal use\)](#)

[❑ Cancel the membership at any time if not satisfied.](#)

[❑ Join Over 80000 Happy Readers](#)

Book Descriptions:

We have made it easy for you to find a PDF Ebooks without any digging. And by having access to our ebooks online or by storing it on your computer, you have convenient answers with cadillac deville 98 manual . To get started finding cadillac deville 98 manual , you are right to find our website which has a comprehensive collection of manuals listed.

Our library is the biggest of these that have literally hundreds of thousands of different products represented.



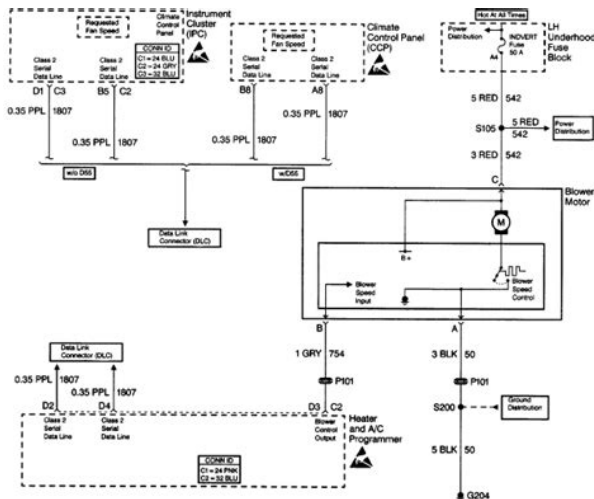
Book Descriptions:

cadillac deville 98 manual




Customer Assistance Information This section tells you how to contact Cadillac for assistance and how to get service and owner publications. It also gives you information on “Reporting Safety Defects” on page 712. Please keep this manual in your vehicle, so it will be there if you ever need it when you’re on the road. The name Cadillac is appropriately that of Antoine ‘de La Mothe’ Cadillac, the French who founded. Convenience, cleanliness and allweather comfort were greatly enhanced in 1910 when Cadillac became the first manufacturer to offer closed bodies as standard equipment. And yet, from this wonderful vocabulary, we have selected “elegance” as the word that most fully characterizes the Cadillac of 1960. The car’s beautiful, cleanlined styling is certainly elegant beyond compare. This was closely followed with the two door hardtop Coupe DeVille and the industrys f i s t modern overhead valve, high compression V8 engine on the 1949 model. If you do this, it will help you learn about the features and controls for your vehicle. In this manual, you’ll find work that pictures and words together to explain. In the notice area, we tell you about something that can damage your vehicle. Many times, this damage would not be covered by your warranty, and it could be costly. These symbols For example, are important these symbols for you and are used on your passengers original battery whenever your vehicle is CAUTION driven POSSIBLE INJURY DOOR LOCK PROTECT UNLOCK. Seats and Seat Controls Safety Belts They’re for Everyone. Power Seats The power seat controls, located on the move and adjust the angle of the seat. It provides additional support to your lower back and it works independently of the other seat controls. Use the power seat control first to get the proper position. For programming information, see “Programmable, Memory and Personalization Features”. Sitting in a reclined position when your vehicle is in motion can be dangerous. <http://n-zvuk.ru/upload/dfid-grants-manual.xml>

- 1.0.




Even up, your safety belts can't do their job when you're reclined like this. The shoulder belt can't do its job because it won't be against your body. Safety Belts They're for Everyone This part of the manual tells you how to use safety belts properly. It also tells you some things you should not with safety belts. And it explains the Supplemental Inflatable Restraint SIR, or air bag system. Here's why They work. You never know if you'll be in a crash. If you do have a crash, you don't know if it will be a bad one. The rider doesn't stop. In a real vehicle, it could be the windshield. With safety belts, you slow down as the vehicle does. You get more time to stop. You stop over more distance, and your strongest bones take the forces. That's why safety belts make such good sense. 110 Here Are Questions Many People Ask About Safety Belts. You may be an excellent driver, but if you're in an accident even one that isn't your fault your passengers can be hurt. Being a good driver doesn't protect you from things beyond your control, such as bad drivers. Be sure to use the correct buckle when buckling your lap/shoulder belt. If you find that the latch plate will not go fully into the buckle, see if you are using the buckle for the center passenger position. In a crash, force to the strong pelvic bones. And you'd be less likely to slide under the lap belt. If you slid under it, the belt would apply force at your abdomen. The belt should be away from your face/neck, but not falling off your shoulder. Shoulder Belt Tightness Adjustment Your car has shoulder belt tightness adjustment feature. If the shoulder belt seems too tight, adjust before you begin to drive. Lean forward slightly, then sit back. If you've added more than 1 inch (25 mm) out as you did before and start again. If you move around in the vehicle enough, or if you pull out the shoulder belt, the belt will become tight again. The shoulder belt is too loose. It won't give nearly as much protection this way. <http://seftrade.cz/files/dfl-800-manual.xml>



GENERAL MOTORS, GM and the GM Emblem, CADILLAC, the CADILLAC Emblem and the name DEVILLE are registered trademarks of General Motors Corporation.

This manual includes the latest information at the time it was printed. We reserve the right to make changes in the product after that time without further notice. For vehicles first sold in Canada, substitute the name "General Motors of Canada Limited" for Cadillac Motor Car Division whenever it appears in this manual.

Please keep this manual in your vehicle, so it will be there if you ever need it when you're on the road. If you sell the vehicle, please leave this manual in it so the new owner can use it.



We support voluntary technician certification.

WE SUPPORT VOLUNTARY TECHNICIAN CERTIFICATION THROUGH AUTOMOTIVE SERVICE EXCELLENCE

For Canadian Owners Who Prefer a French Language Manual:

Aux propriétaires canadiens: Vous pouvez vous procurer un exemplaire de ce guide en français chez votre concessionnaire ou au:

DGN Marketing Services Ltd.
1577 Meyerside Dr.
Mississauga, Ontario L5T 1B9

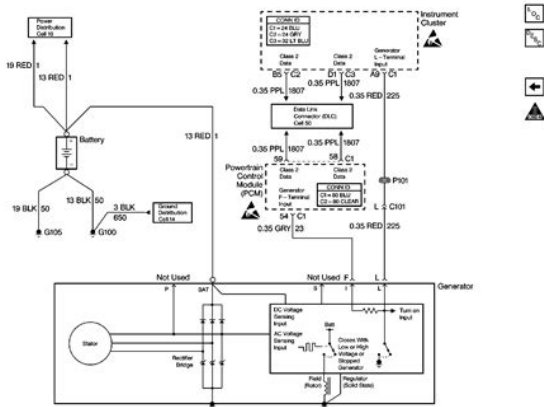
Libro in U.S.A.
Part No. 25665435 C First Edition

©Copyright General Motors Corporation 1998
All Rights Reserved

You can be seriously hurt if your shoulder belt too loose. In a crash, you would move forward too much, which could increase injury. The shoulder belt should fit against your body. The belt is

buckled in the wrong place, CAUTION You can be seriously injured if your belt is buckled in the wrong place like this. In a crash, the belt would go up over your abdomen. The belt forces would be there, not at the pelvic bones. The shoulder belt is worn under the arm. It should be worn over the shoulder at all times. 118 You can be seriously injured if you wear the shoulder belt under your arm. In a crash, your body would move too far forward, which would increase the chance of head and neck injury. CAUTION You can be seriously injured by a twisted belt. If a belt is twisted, make it straight so it can work properly, or ask your dealer to fix it. The belt should go back out of the way. Before you close the door, be sure the belt is out of the way. If you slam the door on it, you can damage both the belt and your vehicle. When a safety belt is worn properly, it's more likely that the fetus won't be hurt in a crash. For pregnant women, as for anyone, the key to making safety belts effective is wearing them properly. They aren't designed to inflate at all in rollover, rear, side or low-speed frontal crashes. This is true even though your vehicle has reduced-force frontal air bags. Air bags plus lap-shoulder belts offer the best protection for adults, but not for young children and infants. The driver's frontal air bag is in the middle of the steering wheel. 124 The right front passenger's frontal air bag is in the instrument panel on the passenger's side. The driver's side impact air bag is in the driver's door. The path of an inflating air bag must be kept clear. Don't put anything between an occupant and an air bag, and don't attach or put anything on the steering wheel hub or on or near any other air.

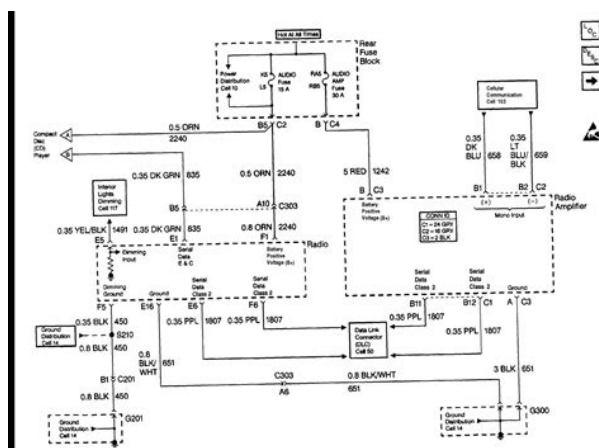
The driver's and right front passenger's frontal air bags are designed to inflate in moderate to severe frontal or near-frontal crashes. The frontal air bags are designed to inflate only if the impact speed is above the system's designed "threshold level." Side impact air bags would not help you in many types of collisions, including frontal or near-frontal collisions, rollovers, and rear impacts, primarily because an occupant's motion is not toward those air bags. Additional windshield breakage may also occur right front passenger air bag. Air bags are designed to inflate only once. After an bag inflates, you'll need some new parts bag system. There are parts of the air bag systems in several places around your vehicle. Your dealer and the DeVille Service Manual have information about servicing your vehicle and the air bag systems. To make the belt longer, tilt the latch plate and pull 130 To make the belt shorter, pull its free end as shown until the belt is snug. Accident statistics show that unbelted people in the rear seat are hurt more often in crashes than those who are wearing safety belts. Rear passengers who aren't safety belted can be thrown out of the vehicle in a crash. Pull up on the latch plate to make sure it is secure. If the belt is not long enough, see "Safety Belt Extender". In force to the strong pelvic bones. If you slid under it, the belt would apply force at your abdomen. That includes infants and all children smaller than adult size. Neither the distance traveled nor the age and size changes the need, for everyone, to use safety restraints. In fact, the law every state in the United States and in every Canadian province says children up to some age must be restrained while in a vehicle. The instructions for the restraint will say whether it is the right type and size for your child. A very young child's hip bones are so small that a regular belt might not stay low on the hips, as it should. A baby doesn't weigh much crash.



<http://www.drupalitalia.org/node/79544>

During a crash a baby will become so heavy you cant hold it. For example, in a crash CAUTION Continued 136 CAUTION Continued only 25 mph 40 will suddenly become a 2401b. Addon child restraints are available in four basic types. When selecting a child restraint, take into only consideration not the childs weight and size,. Rearfacing infant restraints are designed for infants of up to about 20 lbs. 9 kg and about one year of age. This type of restraint faces the rear so that the infant's head, neck and body can have the support they need in a crash. These forwardfacing restraints are designed to help protect children who are from 20 to 9 to 18 kg and about 26 to 40 inches 66 to 102 cm in height, or up to around four years of age. It's designed to improve the fit of the vehicle's safety belt system. Booster seats with shields use laponly belts;. If it is, it will have a label saying that it meets Federal Motor Vehicle Safety Standards. Then follow the instructions for the restraint. You may find these instructions on the restraint itself or in a booklet, or both. If you need to have an anchor installed, you can ask your Cadillac dealer to put it in for you. If you want to install an anchor yourself, your dealer can tell you how to do it. The dealer can then install the anchor for you. In Canada, this work will be done for you free of charge. Or, you may install the anchor yourself using the instructions provided in.the kit. If youre using a forwardfacing child restraint, you may find it helpful to use your knee to push down on the child restraint as you tighten the belt. The safety belt will move freely again and be ready to work for an adult or larger child passenger. Securing a Child Restraint in the Center Rear Seat Position You'll be using the lap belt. The child restraint instructions will show you how. It will be ready to work for an adult or larger child passenger.

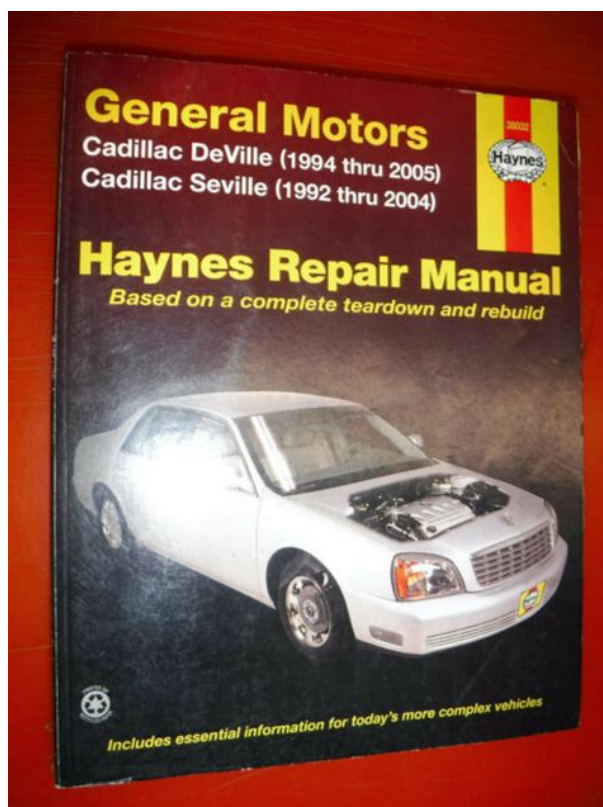
<https://www.euralux.com/images/briggs-and-stratton-14.5-manual.pdf>



Securing a Child Restraint in the Right Front Seat Position Your vehicle has a right front passenger

air bag. See the earlier part about the top strap if the child restraint has one. Be sure to follow the instructions that came with the child restraint. Secure the child in the child restraint when and as the instructions say. To tighten the belt, feed the lap belt back into the retractor while you push down on the child restraint. You may find it helpful to use your knee to push down on the child restraint as you tighten the belt. Accident statistics show that children are safer if they are restrained in the rear seat. The belt can't properly spread the impact forces. In a crash, the two children can be crushed together and seriously injured. A belt must be used by only one person at a time. What if child is wearing a lapshoulder belt, but the child is so small that the shoulder belt is. If the child wears the belt in this a crash the child might slide under the belt. The belt's force would then be applied right child's abdomen. Also explained are the instrument panel and the warning systems that tell working properly and what to do if you have a problem. Keys Door Locks Remote Keyless Entry RKE System. A child or others could be badly injured or even killed. They could operate power windows or other controls even make the vehicle move. If they turned the ignition to and moved the shift lever out of. It has a plug from the door key. The plug has resistor pellet which is part tells the dealer or a qualified locksmith how to make of the vehicle's extra keys. Passengers especially children open the doors and fall out. When a door is locked, the inside handle won't open it. Outsiders can easily enter through an unlocked door when you slow down or stop your vehicle. This may not be obvious You increase the chance of being thrown out of the vehicle in a.

<http://eurocomes.com/images/briggs-and-stratton-1450-engine-manual.pdf>



When unlocking either front door, you can unlock the other doors by holding the key in the turned position for a few seconds or by quickly turning the door key twice in the lock cylinder. To use this lock 1. Move the lever on the door all the way up to the ENGAGED position. Remote Keyless Entry RKE System With this feature, you can lock and unlock the doors, unlock the trunk, open the fuel door and turn on your vehicle's interior lamps from about 10 feet 3 m For more information, see "LocMUnlock Confirmation" later in this section. Pressing this symbol again within five seconds will unlock the other doors. You can tell the battery is weak if the transmitter won't work at the normal

range in any location. If you have to get close to your vehicle before the transmitter works, it's probably time to change the battery. Insert the new battery as the instructions under the cover indicate. 4. Snap the transmitter back together tightly to be sure no moisture can enter. 5. Resynchronize the transmitter by pressing and holding the lock and unlock buttons for about eight seconds within range of the vehicle. Press the trunk release button, located on the headlamp control panel on the left side of the instrument panel, to open the trunk. Your fingers can be trapped under the trunk lid as it goes down. Your fingers could be injured, and you would need someone to help you free them. Keep your fingers away from the trunk lid it and as it is going down. Although your vehicle has a number of theft-deterrent features, we know that nothing we put on it can make it impossible to steal. However, there are ways you can help. Key in the Ignition If you leave your vehicle with the keys inside, it's easy target for joy riders or professional thieves. The light will also flash if the battery has been disconnected and reconnected. To arm the system, do the following 1. PASSKey I1 is a passive system. The system is armed when the key is removed from the ignition.

PASSKey I1 uses resistor pellet in the ignition key that is read by the system in your vehicle. Avoid making hard stops for the 200 miles 322. This is the only position in which you can remove the key. This position locks the ignition, steering wheel and transaxle. It's a theft-deterrent feature. NOTICE If your key seems stuck in LOCK and you can't turn it, be sure you are using the correct key;. To restart when you're already moving, use NEUTRAL N only. NOTICE Don't to shift to PARK P if your Cadillac is moving. If you do, you could damage the Shift transaxle. T r y pushing your accelerator pedal all the way to the floor and holding it there as you hold the key in START for about three seconds. Plugging the cord into an ungrounded outlet could cause an electrical shock. Also, the wrong kind of extension cord could overheat and cause fire. There are several different positions for the shift lever. Column Shifter Console Shifter PARK P This position locks the front wheels. It's the best position to use when you start the engine because your vehicle can't move easily. Your vehicle has a BrakeTransaxle Shift Interlock BTSI. You have to fully apply your regular brakes before you can shift from PARK P when the ignition key is in RUN. If you cannot shift out P, of PARK ease pressure on the shift lever. If you need more power for passing, and you're Going less than 35 mph 55 kmk, push the accelerator pedal about halfway down. Going about or more, push the kmh accelerator all the way down. You can use it on very steep hills, deep snow or mud. If the shft lever is put in FIRST l, the transaxle won't shift into gear until the vehicle is going slowly enough. NOTICE If your front wheels can't rotate, don't try. Reach under the driver's side of the instrument panel and pull on the manual release lever, which is located above the parking brake pedal. Your vehicle can roll. If you have left the engine running, the vehicle can move suddenly.

<https://www.blackhillsdancecentre.com/wp-content/plugins/formcraft/file-upload/server/content/files/1626f653cbc19b---bosch-wte84103gb-manual.pdf>

With your right foot still holding the brake pedal down, set the parking brake. Twn the ignition key LOCK. Remove the key and take it with you. If you can leave your vehicle with the ignition key in your hand, your vehicle is in PARK P. Your vehicle could move suddenly if the shift lever is not fully in PARK P with the parking brake firmly set. And, if you leave the vehicle with the engine running, it could overheat and even catch fire. You have to fully apply your regular brakes before you can shift from PARK P when the ignition is in RUN. It can cause unconsciousness and death. You might have exhaust coming in if Your exhaust system sounds strange or different. Your vehicle gets rusty underneath. Your vehicle damaged in a collision. Your vehicle can roll. Don't leave your vehicle when the engine is running unless you have to. If you've left the engine running, the vehicle can move suddenly. Pressing the control rearward into the second position then releasing it will lower the window completely. If you want to stop the window as it is lowering, press the control forward. Press the control forward to raise the window. The lever returns automatically when the instrument arrow panel will flash in the direction of the turn or lane change. Pull the turn signal lever toward you to

use. When you do If the headlamps are either off or in the DRL mode, the highbeam headlamps will turn on. Move the band to the DELAY position. The closer you move it to LO, the shorter the delay. DeVille Only OFF Turn the band to OFF to turn off the wipers. Be sure to clear ice and snow from the wiper blades before using them. The MIST and "wash" cycles operate as normal and are not affected by the Rainsense function. NOTICE The wipers must be turned off when going through a car wash to avoid damage. A bad mud splash can block your vision could hit another vehicle or go off the road. Check the washer fluid level often. You could be startled and even lose control.

Keep the cruise control switch off until you want to use it. An exception to this is when you're using twilight sentinel. When you press the fog lamp button, a small indicator light will tell you that the fog lamps and the parking lamps are on. Press the button again to turn them off. If you move the control so it is just on, the off quickly when you turn the ignition switch out of RUN. This protects draining the battery in case you have accidentally left the headlamps or parking lamps on. If you need to purposely leave the lamps on for more than 10 minutes with the ignition LOCK or ACCESSORY,. When the light sensor reads darkness outside, the instrument panel lights can be adjusted. When the ignition is turned off, the power to these features will automatically turn off after 10 minutes three minutes if a new car has 15 miles or less. To turn off automatic dimming, press OW. The green indicator light will be illuminated when this feature is active. Time Delay The automatic mirror has a time delay feature which prevents unnecessary switching from the night back to the day position. To turn off automatic dimming, press MIRROR again. The green indicator light will be illuminated when this feature is active. It will be necessary to adjust the compass to compensate for compass variance if you live outside zone eight. Under certain circumstances, as during a long distance crosscountry trip, it will be necessary to adjust for compass variance. The mirror can be calibrated in one of two ways Drive the vehicle in circles at 5 mph 8 until the display reads a direction, or Drive the vehicle on your everyday routine. To lock the glove box door, insert the oval key into the lock cylinder and turn it to the right. Turn the key to the left to unlock the door. To open, lift the front edge. This feature is available on vehicles with leather interiors only. Converter Net. A fixed mobile or a portable handheld system available.

Either system has steering wheel telephone controls and information output through the Driver Information Center DIC. The sunshade can also be opened by hand. Operation is subject to the following two conditions device may not cause harmful interference, 1 this and 2 this device must accept any interference received, including interference that may cause undesired operation. Using both hands, press the handheld transmitter button and the desired button on the universal transmitter. Continue to. press both buttons through Step 5. In a rolling code system, the garage door receiver must be trained to the universal transmitter. Training a Garage Door Opener with "Rolling Codes". You'll know how fast you're going, how much fuel you're using and many of the other things you'll need to know to drive safely and economically. The main components of the instrument panel are A. You may wonder what happens if a vehicle has to have a new odometer installed. Engine Speed Limiter This feature prevents the engine from operating at too many revolutions per minute rpm. When the engine's rpm are critically high, the fuel supply to the engine is shut off. Please follow this manual's advice. Waiting to do repairs can be costly dangerous. If this light stays on, you need service and you should take your vehicle to the dealer at once. If the light is still on after you've pulled off the road and stopped carefully, have the vehicle towed for service. That's normal. If the light stays on, turn the ignition to OFF. Or, if the light comes on when you're driving, stop possible and turn. If the gage pointer moves into the red area, the engine is too hot. That reading means the same thing as the warning light has overheated. In the section "Problems on the Road,". This could lead to costly repairs that may not be covered by your warranty. If so, reinstall the fuel cap, making sure to fully install the cap.

The diagnostic system can determine if the fuel cap has been left off or improperly installed. The

light goes on when you turn your key to RUN or START. It goes off once you start your engine. That's a check to be sure the light works. It works only when the ignition the digital cluster, if the fuel level approximately 2 gallons 7.6 L of being shown. See "Analog Control Buttons" later in this section. The fuel data panel tells you all you need to know about the fuel economy and how far you can travel with the fuel remaining. Each of the fields for the hours, minutes and seconds are two numeric digits. Pressing INFO RESET when a nonresettable display appears will cause a "recall" mode to occur. When this happens, all Driver Information Center DIC warning messages that have been displayed since the ignition key was turned to RUN will redisplay. To operate, press the TIMER button until TIMER 000000 is displayed on the Driver Information Center DIC. Each of the fields for the hours, minutes and seconds are two numeric digits. To avoid being stranded, have the electrical system checked dealership. You can reduce the charging overload by using the accessories. Turn on the lamps and radio, set the climate control on AUTO and the fan speed on HI, and turn the rear window defogger on. CHECK COOLANT LEVEL 2 This message will appear when there is a low level of engine coolant. Have the cooling system serviced by a technician as soon as possible. If it does not cool down, turn off the engine and have it serviced before driving it again. Severe engine damage can result from an overheated engine. See "Engine Overheating" in the Index. ENGINE HOT N C OFF 16 This message displays when the engine coolant becomes hotter than the normal. To avoid damage, the air conditioning compressor automatically turns off and the electronic climate control system will automatically switch from AUTO to ECON. Let only a qualified technician work on your vehicle.

See your dealership for service at once. SERVICE BRAKE FLUID SWITCH in the brake fluid detection circuit causes this message to display if the ignition is in RUN. It means that computercontrolled system has come on to help your vehicle continue to go in the direction in which you're steering. This stability enhancement system activates when the computer senses that your vehicle starting to spin, as it might if you hit a patch of ice or other slippery spot on the road. Slippery road conditions may exist if this message is displayed, so adjust your driving accordingly. This message will stay on for a few seconds after the traction control system stops limiting wheel spin. For a brief description of each feature except for climate control and radio personalization, see each feature in the Index. To begin programming, press and hold the INFORMATION INFO and RESET INFO RESET buttons at the same time to display the following prompts. DOORS LOCK IN GEAR All doors automatically lock when shifted out of PARK P. If this prompt is chosen, FEATURE ON appears. If a no response was made, DOORS UNLOCK KEY OFF will appear. At this point, a yes or no response automatically brings up the LGHTS FLSH AT UNLOCK feature. To begin programming, press the INFORMATION INFO and RESET INFO RESET buttons at the same time for about two seconds. The first message to appear is DOORS LOCK IN GEAR. This feature allows two different drivers to store and recall their own radio settings for AM and FM presets, last tuned station, volume, tone and audio source radio, cassette or CD. Its based on the engine oil temperatures and your driving patterns. To see the display, press the INFORMATION INFO button until XX OIL LIFE LEFT appears. If you see 99% OIL LIFE LEFT, 99 percent of your current oil life remains. Your Electronic Climate Control ECC system uses ozonefriendly R 134a refrigerant. With the ECC system, you can control the heating, cooling and ventilation in your vehicle.

Press the blue button for a cooler setting or the red button for a warmer setting. Passenger's Side Temperature Knob With this feature, the right front passenger can control the temperature of air for hisher own zone. Press the red or blue temperature buttons to adjust the temperature if necessary. This is helpful when you are trying to cool the air quickly or limit odors entering your vehicle. In the AUTO mode, the system will use recirculation as necessary to cool the air. The system will stay in the selected mode until the MODE button is pushed again. Press the up or down arrow to cycle through available modes. Automatic Operation When the system is set for automatic operation, sensors will control the air delivery mode. Each ignition cycle cancels recirculation, whereas,

DEFROST will change to automatic operation when the ignition is shut off and then turned back on. Fresh air will continue to flow through the vehicle, and the system will try to maintain the previously set temperature. The outside temperature will show on the display when the system is OFF. AC Press this button to turn the air conditioning on and off. This reduces the time it takes for your inside a i r vehicle to cool down. Then keep your windows closed for the conditioner to work its best. With the digital cluster climate control panel, press the AUTOLECON button to assist in cooling a i r and in maintaining proper airflow. Outside air will also enter the vehicle when the heater conditioning fan is running. The front outlets are located in center and at each side of the instrument panel. The heater and defroster will work far better, reducing the chance of fogging the inside of the windows. Keep the path under the front seats clear of objects. If you do, you could cut or damage the warming grid or the integrated rear window antenna, and the repairs wouldn't be covered by your warranty. HVAC Steering Wheel Controls Some heating and cooling controls can be adjusted at.

You will get the most enjoyment out of it if you acquaint yourself with it first. Find out what your audio system can do. SEEKTUNE Press and release this button to seek to the next higher or lower radio station. Pressing and holding this button until a chime sounds puts the radio in a tune mode. In this mode, higher or lower radio stations are advanced to in small increments until the SEEKTUNE button is released. Turn the knob to the right to increase and to the bass. TREB Press this knob lightly so it extends. Turn the knob to the right to increase and to the left to decrease treble. Try a new tape. REV Press the left arrow to rewind the tape rapidly. The radio will play while the tape reverses and REV will appear on the display. You may use your station pushbuttons to tune to another radio station while REV mode. Press the knob again to turn the system off. Turn it to the left to decrease volume. You can set up to 18 stations six AM, six FM1 and six FM2. Just 1. Turn the radio on. 2. Press BAND to select AM, FM1 or FM2. 3. Other controls may have different functions when a tape is inserted. The display will show an underlined tape symbol. It will still play tapes, but you should clean it as soon as possible to prevent damage the tapes and player. See "Care of Your Cassette Tape Player". Release it to return to playing speed. Press and hold the right arrow to fast forward to another part of the compact disc. Release it to return to playing speed. TUNESEEK When this button is pressed, it has two positions. Source include cassette and compact disc. The audio source must be loaded to play. Available loaded sources are shown on the display. If a source is being used, it will be underlined on the display. If none of the audio sources are loaded, NO SOURCE LOADED will appear on the display. RDS mode gives you many useful new features.

<http://schlammatlas.de/en/node/15987>