



**File Name:** Bush sound bar manual.pdf

**Size:** 2925 KB

**Type:** PDF, ePub, eBook

**Category:** Book

**Uploaded:** 15 May 2019, 15:24 PM

**Rating:** 4.6/5 from 788 votes.

# Download Now!

Please check the box below to proceed.



I'm not a robot



reCAPTCHA  
Privacy - Terms

## Book Descriptions:

# Bush sound bar manual



If you have a question to ask, need some advice or are having any issues, then please contact us using one of the options within this page. Please also scroll down this page to see further support information. Try to power on using the button on the TV Replace the batteries in your remote control Unplug your TV from the mains for 60 seconds, replace the plug and try again. If the issue persists, please contact us using the details on the right hand side of this page. All you will need is a smart phone with a camera and of course your remote control! Ensure that you are within range of the radio for Bluetooth functionality, 10 metres or less 33 feet or less. If possible, turn off other nearby Bluetooth devices or disable their Bluetooth functionality. Any defect that arises due to faulty materials or workmanship will be repaired free of charge or if applicable the product will be replaced or the purchase price refunded where possible during this period by the dealer from who you purchased the unit. The guarantee will be rendered invalid if the product is resold or has been damaged by inexpert repair. We do not retain or indeed use your email address for any other purposes. Bush is a registered trademark of Argos Ltd. We reserve the right to update, alter or remove this website without prior notice. In this supplied RCA RCA audio cable. Take care to leave apart. 5mm between the screw heads and the wall. NOTE The Sound bar should be located at least NOTE You will need to ensure the screws are long 7.5cm below the bottom of the TV. Any defect that arises due to faulty materials or workmanship will either be replaced, refunded or repaired free of charge where possible during this period by the dealer from whom you purchased the unit. If you need help or have damaged or This allows the terminals contact with the preinstalled battery.If the problem persists, contact the retailer if the machine is still under guarantee.<http://etudbilgisayar.com/upload/dell-e153fp-manual.xml>

- **bush sound bar manual, bush sound bar instruction manual, bush a4 sound bar manual, bush small screen sound bar manual, bush sound bar manual, bush sound bar manual, bush sound bar manual download, bush sound bar manual pdf, bush sound bar manual free, bush sound bar manual 2017, bush sound bar manual.**



Customer helpline 0870 600 3030 PROBLEM POSSIBLE SOLUTION No Power. Any defect that arises due to faulty materials or workmanship will either be replaced, refunded or repaired free of charge where possible during this period by the dealer from whom you purchased the unit. Touch device users, explore by touch or with swipe gestures. Shop Account Wishlist Trolley Thank you for your continued patience and support. With 2 active speakers and wired subwoofer, you can hear every booming bass and highpitched note. Perfect for bringing films and songs to life. Fill the room with your favourite music or podcasts by hooking up different devices. Either go manual with the 3.5mm AUX port, or stream on Bluetooth enabled devices such as a smartphone or tablet. Model number B3515A. Sound technology 80 watts. 3D sound technology projects sound over and around you, making for a more immersive experience. Audio processing 2.1 channels within the system. Builtin active amplifier. Connectivity Optical audio port included cable included. HDMI ports not included. 3.5mm line in compatible. Bluetooth enabled. Not WiFi compatible. Setup and features Power consumption 80W. Auto power off. Peak power output 80 watts. Speaker bar RMS output 30 watts. Subwoofer RMS output 50 watts. Includes a builtin instruction manual. Wall mountable fixings included. Dimensions Size of speaker bar H6.4, W82, D6cm. Weight of speaker bar 1.32kg. Size of subwoofer H37, W25, D13cm. Weight of subwoofer 2.56kg. System size H6, W11.8, D5cm. Weight of system 0.52kg. General information Includes Ture. Remote control included batteries required 2 x AAA included. Manufacturers 1 year guarantee. We have recently dropped this price, from 64.99 The customer and brand answers you'll see above are submitted independently. As we don't review these answers, we can't take responsibility for anything they may say. The responses from Argos colleagues are accurate at the time of publishing. <http://www.firetac.com.au/userfiles/dell-e1705-repair-manual.xml>



For the latest info, you should check the product page. This product comes with a minimum one year manufacturer's guarantee, unless otherwise stated in the specification above. All Rights Reserved. For a better experience, please enable JavaScript in your browser before proceeding. It may not display this or other websites correctly. You should upgrade or use an alternative browser. I test my

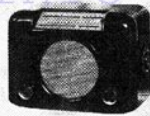
laptop Bluetooth if can connect to another BT and is working fine. I try with my friend laptop is same problem. Is any way i can reset that sound bar system or if you have any suggestion pls write Heres the Manual for that device and it has detailed instruction on how to connect that device into your laptop. Go to Device Manager then expand Network Adapters once there right click on the bluetooth device then select uninstall and reboot your PC as it will reinstall the driver properly. Opinion needed. Opinion needed. We are working every day to make sure our community is one of the best. By continuing to browse you consent to our use of cookies. You can understand more and change your cookies preferences here. Money Money Loading. Campaigns Campaigns Loading. Services Services Loading. More from Which More from Which Loading. Navigate around Which. Search Which My account My account My account Hello View account Log out My account Log in Join Search Youll instantly be able to compare our test scores, so you can make sure you dont get stuck with a Dont Buy. Sign up now or login Sound bars are the simplest way to add quality sound to your home cinema setup, but there are a few common niggles that can ruin the experience. We've quizzed our home cinema experts to get answers to some of the most frequently asked questions so you can get back up and running.

Jump straight to the problem youre having Sound bar turns off or goes to sleep while sound is playing In order to prevent them from consuming unnecessary power when they're not being used, most sound bars power down if they don't detect an audio signal. However, some sound bars are more sensitive than others and some will power down even when there's audio being played at a quiet volume. Some cheaper sound bars may only offer a 3.5mm audio input. We'd only ever recommend using this connection if your TV or sound bar has no digital alternatives such as digital optical Toslink, coaxial or HDMI. Our sound bars jargon buster reveals all the tech terms you need to know. It's important that when you have a sound bar plugged in over a 3.5mm cable, the volume from your TV is turned up as high as it can go. This means you only ever need to adjust the volume using your sound bar's remote control and also means your TV is delivering a powerful enough signal to ensure your sound bar never goes to sleep when sound is playing. Connecting to a settop box or disc player This can also happen when your sound bar is connected to a settop box such as Freeview, Sky or a Bluray or DVD player that has its own volume control. Like the above tips, you should ensure the settop box has its own volume set as high as it can go. This should prevent your sound bar from going to sleep. Sound bar sounds no better than my TV A common reason for this is because the sound bar isn't actually playing any sound at all, and the TV speakers are still doing all the work. This can happen when you're watching TV using a settop box such as a Sky or Freeview box. Even if your settop box is connected to your TV, and your TV is connected to your sound bar, sometimes this won't be enough and you'll need a direct connection instead. This can happen when you're using a settop box that isn't directly connected to your sound bar.

"TRADER" SERVICE SHEET  
950

BUSH  
DAC90

A.C./D.C. Transportable  
2-band Table Superhet

[illegible]

### CIRCUIT DESCRIPTION

[illegible]

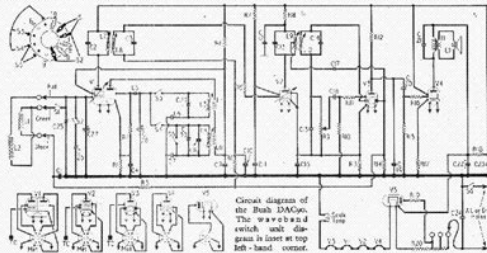
Intermediate frequency 455 kHz

[illegible]

### COMPONENTS AND VALUES

	REACTIONS	Yields
20.1	V2 diox. (1 h.)	100%
20.2	V1 ox. (0.1 h.)	234%
20.3	V1 ox. (overnight)	176%
20.4	at 70°C. overnight	100%
20.5	Grub. sample	200%
20.6	A.S.C. decolor.	134%
20.7	V2 ox. (1 h. F. filter)	470%
20.8	V2 ox. (overnight)	100%
20.9	V2 ox. (overnight)	9.36%
20.10	V2 ox. (C. redist.)	100%
20.11	V2 ox. (overnight)	100%
20.12	V2 ox. (overnight)	64.5%
20.13	V2 ox. (overnight D.)	170%
20.14	A.S.C. chloride filter	100%
20.15	V1 C.O. mixed	470%
20.16	V1 ox. (at paper)	17%
20.17	V1 ox.	160%
20.18	at 70°C. overnight	100%
20.19	orange (filter)	100%
20.20	bleach (distill)	100%

tapped at 900; 1 sec. - 100 Hz from V2 ox.

[illegible]

Circuit diagram of the Bush DACyco. The waveband switch unit diagram is inset at top left - hand corner.

For more information remember [www.savoy-hill.co.uk](http://www.savoy-hill.co.uk)

<http://www.drupalitalia.org/node/76425>

Depending on the age of your box, you might need to either connect RCA cables directly to your sound bar these are the red and white connectors on older models or use digital optical newer models and, again, connect these directly to your sound bar. You'll still need to use the Scart or HDMI cable to connect to your TV, as these will provide the pictures. In addition, you will need to go into your settop box's audio settings to ensure that sound is routed through your sound bar, instead of to your TV. Change the settings to the audio connector you have chosen to connect to the sound bar, for instance optical or 3.5mm aux. Ideally, your TV and sound bar will support HDMI ARC Audio Return Channel. This allows you to connect your kit directly to your TV, and your TV will handle sending the audio back to your sound bar via HDMI. You can check to see whether your TV and sound bar have ARC by checking to see whether the ports are labelled as such or by checking the manual. As a rule, cheap TVs and cheap sound bars don't support this. Things get more complicated if you have multiple devices connected to your TV. See our guide to setting up a sound bar for more information. I get no sound from my sound bar at all If your sound bar has multiple input plugs on the back, make sure your sound bar is set to that input. For example, if your sound bar has multiple optical inputs, ensure you have selected the correct input on your remote control. If you're sure your sound bar is set to the correct source, check that your TV or settop box's settings are compatible with your sound bar. Check your sound bar manual for supported audio formats and then find the audio outputs settings menu this will vary by device and find a format that matches those supported by your sound bar. If you don't have that information to hand, use trial and error to find an output format that works. My picture and sound are out of sync.

<http://givinggroup.com/images/boss-ph2-manual.pdf>



Many modern boxes have a feature to prevent this, and you'll find this in your audio settings menu. My sound bar is quiet or sounds unnatural Many newer models have a Night Mode that turns down certain noises that are more likely to disturb somebody sleeping in the next room. Check you haven't turned that mode on by using your sound bar's remote control. Similarly, most sound bars have a dialogue enhancement mode that boosts higher pitched sounds such as speech. It can work well, but our expert audio panel has found on some models it can make everything sound awful. As above, check using your remote control that you haven't accidentally enabled this mode. Alternatively, it's also possible that your TV, settop box, or disc player is outputting audio that your sound bar can't use properly. Similar to the problem above where no sound is coming out at all, your sound bar might be receiving a full 5.1 surround sound mix but may only support 2.1 or 2.0. This means you might be missing out on a huge amount of the sound that's supposed to be in the movie you're watching. Ensure that your TV and other boxes aren't outputting in surround sound, again by finding the audio settings menus and ensuring they're set to either 2.0 or 2.1. I get a static noise or hum from my sound bar First of all, ensure both ends of the cable are fully and securely inserted into your TV and sound bar. Try and keep the cable clear of other connectors, especially power, in the tangle of wires behind your TV. Simply moving the 3.5mm cable can sometimes solve this issue. If this doesn't solve the problem, make sure your TV volume is turned all the way up so you can adjust the sound bar's volume directly. This might help since interference is introduced when the source TV volume is low and the output sound bar volume is high. If neither of the above work, buy a ground loop isolator. This is an extra adapter that sits between your TV and your sound bar, and should eliminate noise.

<http://artisans-commerçants-corbigeois.com/images/boss-ph3-phase-shifter-manual.pdf>



They cost between 5 and 7 if you buy online. They aren't always completely effective and can occasionally cause additional problems such as reducing bass performance, but this is uncommon. If your sound bar supports it, use an alternative connection such as HDMI or digital optical. These are generally much less susceptible to noise. My subwoofer isn't working It doesn't require external power but, again, ensure the connection is secure. If there are any buttons or menus that alter the settings of your subwoofer, including a button for increasing the bass of your sound bar, use these to check it hasn't been turned down or turned off. If all else fails, contact the manufacturer as failed subwoofers are not uncommon. If none of these things are working, it might be time to consider a new sound bar. Check out our sound bar reviews to ensure you buy the best one. SHARE THIS PAGE More on sound bars Sound bar reviews Best Buy sound bars Dont Buy sound bars How to buy the best sound bar All guides about sound bars You may also be interested in Best Buy televisions Top five best PVRs for 2020 Samsung vs LG TVs which is best. Latest news Latest TV sound bars on test can you get great sound from a cheap sound bar 07 AUG 2020 But is it art. LG's paintinginspired GX OLED TVs reviewed 31 JUL 2020 LG's 2020 OLED, NanoCell and 4K TVs reviewed 23 JUL 2020 Get cinemaquality surround sound at home with a Best Buy TV sound bar 14 JUL 2020 More on sound bars Sound bar reviews Best Buy sound bars Dont Buy sound bars How to buy the best sound bar All guides about sound bars You may also be interested in Best Buy televisions Top five best PVRs for 2020 Samsung vs LG TVs which is best. Latest news Latest TV sound bars on test can you get great sound from a cheap sound bar 07 AUG 2020 But is it art. Item has been repacked by seller in its original packaging or other we proudly reuse packaging. Box may have some tatty and imperfection due to bulk packaging supplied.

Please contact us for more detail for these payment. Please note this method of payment can take up to 14 days to clear. We will not post your items until payment has cleared. If you need to post to other address please contact us before order has dispatch. From that time we would expect you to receive your order within 25 working for deliveries within the mainland UK. In such case, please contact us and we will pay postage for return or arrange courier collection in case the item is bulky. We advise you to use recorded delivery for return. We will not be liable for lost of item in transit during return. Items need to be packed for transit and make sure all the accessories are included in return. All items come with a 90day warranty unless otherwise stated. For the change of mind and warranty claim, we will not offer the return postage. Please contact us before returning to issue RMA number so we can process the return. We advise you to use recorded delivery for return. We will not be liable for loss of item in transit during the return. Items need to be packed for transit and make sure all the accessories are included in the return. Refund will be issued within 23 working days of receipt of the returned item. Sign up for newsletter today. You can add this item to your



Watch list to keep track of it. Learn more opens in a new window or tab This amount is subject to change until you make payment. For additional information, see the Global Shipping Programme terms and conditions opens in a new window or tab This amount is subject to change until you make payment. If you reside in an EU member state besides UK, import VAT on this purchase is not recoverable.

<https://buddingheights.org/wp-content/plugins/formcraft/file-upload/server/content/files/1626c78455e4ec---a-manual-of-acupuncture-point-cards.pdf>

For additional information, see the Global Shipping Programme terms and conditions opens in a new window or tab Learn More opens in a new window or tab Learn More opens in a new window or tab Learn More opens in a new window or tab Learn More opens in a new window or tab The item may have some signs of cosmetic wear, but is fully operational and functions as intended. This item may be a floor model or an item that has been returned to the seller after a period of use. See the seller's listing for full details and description of any imperfections. You're covered by the eBay Money Back Guarantee if you receive an item that is not as described in the listing. Find out more about your rights as a buyer opens in a new window or tab and exceptions opens in a new window or tab. Contact the seller opens in a new window or tab and request post to your location. Please enter a valid postcode. Please enter a number less than or equal to 1. We may receive commission if your application for credit is successful. Terms and conditions apply. Subject to credit approval. We may receive commission if your application for credit is successful. All Rights Reserved. User Agreement, Privacy, Cookies and AdChoice Norton Secured powered by Verisign. By continuing to browse the site you are agreeing to our use of cookies. Are you sure to remove this product This is an easy way to use external speakers while keeping your space organised and cable free. Bluetooth soundbars and speakers can enhance your viewing experience, while Bluetooth headphones let you enjoy your programmes without be disturbed. You can also connect a Bluetooth keyboard and mouse or gamepad to make navigating menus even easier.

[australiandiamondnetwork.com/ckfinder/userfiles/files/7-speed-manual-double-clutch.pdf](http://australiandiamondnetwork.com/ckfinder/userfiles/files/7-speed-manual-double-clutch.pdf)

If your TV doesn't support Bluetooth you will not be able to connect Bluetooth devices wirelessly and may have to use a cable Click to Expand If your TV came with a Smart Remote then it definitely supports Bluetooth as that's how the remote pairs to the TV. If this is the case you may be able to find a third party Bluetooth adapter that can connect your TV to your device. Click to Expand Click to Expand Follow the steps that correspond to your TV's model range. If your device still doesn't appear try turning both devices off and on again If your device still doesn't appear, try turning both devices off and then on again If your device still doesn't appear try turning both devices off and on again If your device still doesn't appear try turning both devices off and on again Click to Expand Please follow the steps that correspond to your TV's model range. If needed, check the device's manual. Select the option that allows you to add If it still isn't showing try turning both the device and your TV off and then on again Select an option that allows you to add If it still isn't showing try turning your device off and then on again Your feedback helps us provide better support We're here to help. Select your product from the menus below and we'll show you where your number is. See compatible TVs Support Support Support My Sony Community Stay informed with a Sony account to get news, offers and promotions. Sign up now Hi My Sony Sign in Favourites My Products Register a new product My Account Details Newsletter Preferences Community Favourites Sign out Favourites Search Sony Sony Sites Search Sony To get the full experience on Sony.co.uk, please change your settings to allow JavaScript. Check your device manual for model-specific information. Connect the other end of the HDMI cable to the HDMI OUT audio device. Connect an optical audio cable from the TV's optical digital audio out to the OPTICAL IN on your audio device.



Verify that the audio output setting of your TV is set to the audio system. Check your TV manual for more details. Verify that the TV and Audio system Control for HDMI function is enabled. Check if the Night Mode is set to ON. Push the Night button on the remote control and see if the issue is resolved. Check the status of the subwoofer LED indicator. The link between the unit and the subwoofer may not be complete. Set the link settings again. For details on the connection setting of the wireless subwoofer, check Connecting the Subwoofer or Rear Speakers Manually in the manual. Select Setup. Select Resetting. Select Reset to Factory Default Settings. Select All Settings. Select Start. Select SYSTEM. Select SYS.RST. When START appears on the display of the Sound bar, press ENTER. When RESET disappears, disconnect the AC power cord mains lead, then plug it back in. When Night mode is set to ON, set it to OFF. For details of the Night mode, refer to the manual supplied with the product. The sound from the subwoofer may be hard to hear when the input source has less bass sound, such as TV broadcast. How to troubleshoot low sound or no audio from the rear surround sound speakers No sound from the soundbar connected to the HDMI ARC port of the TV when the Control for HDMI function is off Find information and receive instant notifications about your product We recommend downloading and installing the latest version of one of the following browsers Our site is not optimized for your current browser. A newer version of your browser may be available Chrome Chrome Download the latest version IE Internet Explorer Download the latest version Firefox Firefox Download the latest version Apple Safari Download the latest version Proceed with current browser for now Proceed with current browser for now. One remote for all your devices. Guaranteeing optimal TV reception every time. Completely safe and functional for total protection.

Download manuals, browse FAQs and watch instruction videos. Search for your product to find all related support information. Browse through detailed support information like manuals, FAQs and videos. To use this site properly, please enable Javascript. Please try each of the below in turn You can see how to do this on our soundbar setup page. Our support advisors are on hand to help you out. Alternatively, contact our support team who will be happy to help. Please provide your soundbar serial number and your TV make and model number for a faster service. If your query is related to customer support, use the form on the contact us page. Any other product or accessory has a one year warranty. If you don't like it, simply return it for a full refund. Please note that if there is no fault with the speaker, the customer is liable for postage costs. Learn more. One remote for all your devices. Guaranteeing optimal TV reception every time. Completely safe and functional for total protection. Find your setup code in 3 easy steps Please use our website for FAQs, movies or to contact our support team. Please upgrade your browser to improve your experience and security. But with a wide choice of different cables and connectors, it can be difficult to know which one to use to get the best out of your kit. We'll start with the option that gives the best audio quality. An HDMI cable can cope with any sound system from 5.1 to 7.1 surround sound, and even higher. But if yours doesn't have one don't worry, the next section explains how to get the digital audio experience if HDMI isn't an option. Optical cables are a little different in that they convert the electrical signal to optical light to send it down the cable, then convert it back to an electrical signal at the other end. If you plug your soundbar into the TV headphone socket, it's probably going to sound awful, so it's best to check that your TV has a lineout port first.

The only thing to remember here is to plug the red connector into the red output socket and the white one into the white output socket on your TV, then connect the other end to the soundbar. If your TV doesn't have a stereo RCA output and you use a settop box, DVD, or BluRay player, you can plug your soundbar into one of these devices instead just remember, the sound will only play from the device it's connected to. To find out more on how to manage cookies and information on how we use your personal data please read our privacy policy, which we've updated in accordance with the General Data Protection Regulation GDPR. Ask for FREE. Please check and try again. I was getting very frustrated! That was simple and it worked! I pressed this button by accident. Spirituality

Continue with Google Continue with Facebook In doing this, you just need to make sure that the cables are pro. read more. You have three options to connect the Philips Soundbar speaker HTL2101 to your TV but since you have a red, yellow and white cable, you have. read more In doing this, you just need to make sure that the cables are properly connected. You can also use the TV remote to adjust the sound bar volume. If everything are properly connected, you should hear the sound coming from the sound bar. Remote control for bush b6609 soundbar does not work How can i get sound from my philips lx700 sound system connected to my lg tv via a digital optical cable. I have connected a 5.1 surround sound system via a hdmi and optical cable to my tv but only the front two speakers work and the sound is out of syn. Connecting ps3 to bush sound bar via optic cable Why does the sound drop off for a second or 2 at the start of tv ads when transmitting sound through a optical cable to surround sound system. I do not have a cable box and am trying to connect my surround sound system to my tv. Usually, the red and white cable is for audio connectors and labeled as an Aux or output.

If there is no sound on your soundbar, check if your soundbar is not muted. You can also reset your soundbar, just put into mute mode then press the AUX or COAX twice. Not getting any sound when i hook up a samsung soundbar to a sharp lcd tv using optical audio cable. Samsung tv bush soundbar connection How do you connect a samsung lcd tv with no audio outputs to a surround sound system to receive better sound than tv speakers has no optical outputs How to connect optical digital audio cable to surround sound basic cable shaw. Connecting my bush soundbar to my bush tv How do i connect my 65 in mitsubishi tv with analog audio output only to my new lg sound bar with an optical digital inputs. Please be sure that the connection is correct. Put the red cable to the red hole on out and input the same with white and yellow colors. If not works trade the cable and use another cable. If your soundbar have an HDMI slot choose this and use an HDMI cable for best sound result, connect it using the HDMI cable. You can also use your component to connect the philips soundbar and your TV using HDMI or RCA cables. I got a rca surround sound kit and while watching tv or a movie from the pc through rca cable and optical the sound cuts out when there is quiet scene Connect my bush soundbar to my lg smart tv I have a samsung sound bar, and just got a new rca tv. Connecting bush soundbar Connecting sharp htbs200 sound bar to lg tv. If you using the RCA cable audio then you need to plug it on the output audio slot of the TV. Then on your soundbar connect the other end and follow the color code. I have a new smart hub tv with an optical connection to an external speaker bar. I got a lg 42ls4600. Connecting a tv to a bush soundbar My ilive sound bar says invalid when i have the optical cable connected. You will need to contact HD service provider to fix this problem. Hope it helps you!

source I got a toshiba tv and bush sound bar it works fine on normal channels but no sound when on hd channels Where in nz do u get cards etc has a slot at the back Bush soundboard won t work on hd channels I have just bought a samsung ue40es5500 television and have linked it to a samsung hwe450 soundbar via an optical cable. Bush soundbar 6609 problems How do i connect lg sound bar to insignia tv when tv has no optical cable plug. Panasonic sapt960 has no sound from digital optical cable attached to lg ls4500. Check for damages or it might be crimped or looped. Straighten the cable. You can also try to troubleshoot it by trying out other cable connectors. How do i connect the panasonic home theater sound system with dvd player scxh10 to my sony bravia bx300 tvaudio from tv to the home theater sound. Bush cbar4 soundbar how to connect to sky and xbox I have bose speakers connected to new vizio hd tv via optical audio cable. Lack of sound via optical cable. Connecting the bush cbar4 to the tv I have a lg lcd tv and a sony surround sound. Other possibilities could be the analog digital button has been pressed or your speakers turned off. Hi i am trying to hear sound from 47lw6500 to my reciever through optical and no sound at all. I have connected my lg tv to a panasonic home theatre with optical leads but can not get any sound Perhaps the Sony Soundbar is not programmed right. I am trying to connect an lg soundboard to a sony bravia tv and there is no sound coming from the soundboard via optical cable. Connect bush a4 soundbar to sony

tv My sony bravia does not have optical or coaxial audio output.I cannot get the pic from my lg dvd player, have sound, i have a sony surround sound system and no hdmi cables,only rca jacks. What adapter do i need.I have my rca sound bar connected to my proscan tv via audio cable, they are connected correctly but i still have no sound from my sound bar.what am My bush cbar4 soundbar keeps turning off I have a bose av18.

<http://www.raumboerse-luzern.ch/mieten/3g3mv-inverter-manual>